

**ZHEJIANG FANGWEN SPECIAL STEEL CO.,LTD**

**238# Haitang RD,Economic Development**

**Zone,Wenzhou,Zhejiang,China**

**PHONE:008613175677197**

**FAX:0086057786879200**

**[sales@kcmtech-valve.com](mailto:sales@kcmtech-valve.com)**

**[www.kcmtech-valve.com](http://www.kcmtech-valve.com)**

## **CATALOG--01**

**Subject to change without notice.**

# **CAMLOCK&GROOVED COUPLINGS**



**API6D-0305**



**01 202 CH/Q-02 0058**



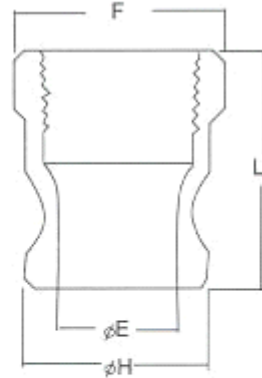
**04909Q10555R1S**

# Camlock coupling (cam and groove coupling)



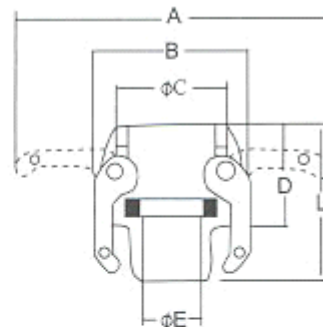
Standard: MIL-C-27487 / DIN2828  
Material: Stainless steel 304/316/316L

## Type A Adaptor Female



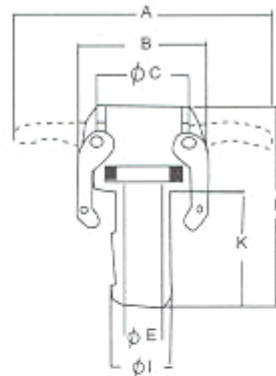
SIZE	inch	1/2"	3/4"	1"	1-1/4"	2"	2-1/2"	3"	4"	6"
	mm	15	20	25	32	50	65	80	100	150
E		14.3	21.0	23.8	30.8	46.0	58.0	73.2	98.2	149
F		29.3	39.2	43.8	51.9	74.7	82.3	97.8	126.8	191
H		24.3	32	36.6	45.5	63	75.9	91.5	119.5	175.9
L		41.3	39.0	48.5	52.5	61.7	68.0	70.0	74.6	86

## Type B



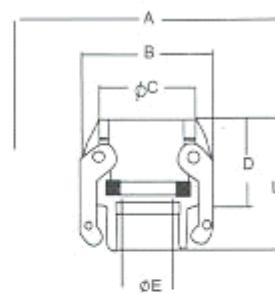
SIZE	inch	1/2"	3/4"	1"	1-1/4"	1-1/2"	2"	2-1/2"	3"	4"	6"
	mm	15	20	25	32	40	50	65	80	100	150
A		68.4	116	125	181	189	199	210	254	282	409
B		39.9	53.3	60.9	82.6	90.3	99.8	112.4	137.6	165.6	255
C		34.9	41	47	58	65	75	90	108	140	198
D		32.5	32	39	44.5	45.0	50.0	54.3	55.5	55.5	73
E		14.3	19.0	25.0	32.6	39.0	50.8	63.0	76.2	100.8	146
L		49.2	51	58	67.2	65.7	75.4	83.3	86.5	88.8	116

## Type C



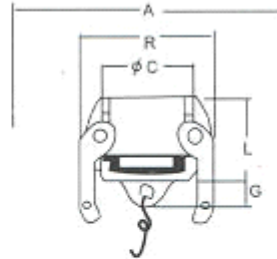
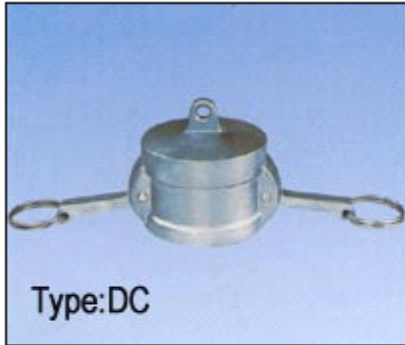
SIZE	inch	1/2"	3/4"	1"	1-1/4"	1-1/2"	2"	2-1/2"	3"	4"	6"
	mm	15	20	25	32	40	50	65	80	100	150
A		68.4	116	125	181	189	199	210	254	282	409
B		39.9	53.3	60.9	82.6	90.3	99.8	112.4	137.6	166.6	255
C		34.9	41	47	58	65	75	91	108	140	198
E		8.0	13.8	19.8	25.9	32.3	44.5	56.7	68.0	93.4	142
J		14.6	21.0	27.0	33.7	40.1	52.7	66.3	79.0	104.4	157
K		41.3	51	57	59	61	70	79	102	108	146
L		84.9	828	95.2	102.5	104.0	129.0	142.3	157.1	163.5	214

## Type D Coupler Female



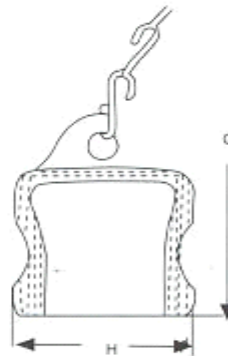
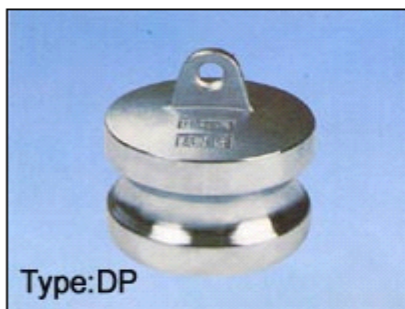
SIZE	inch	1/2"	3/4"	1"	1-1/4"	1-1/2"	2"	2-1/2"	3"	4"	6"
	mm	15	20	25	32	40	50	65	80	100	150
A		68.4	116	125	181	189	199	210	254	282	409
B		39.9	53.3	60.9	82.6	90.3	99.8	112.4	137.6	166.6	255
C		34.9	41	47	58	65	75	91	108	140	198
D		32.5	32	39	44.5	45.0	50.0	54.3	55.5	55.5	74
E		14.3	21.0	25.0	34.9	39.0	50.8	63.0	76.2	100.8	146
L		49.2	51.0	61.0	67.5	67.0	72.2	83.3	86.5	88.8	114

## Type DC Dust Cap



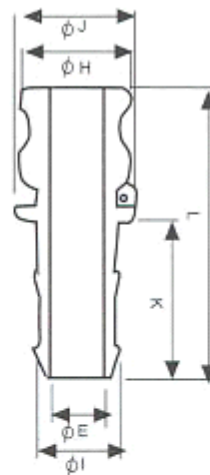
SIZE	inch	1/2"	3/4"	1"	1-1/4"	1-1/2"	2"	2-1/2"	3"	4"	6"
	mm	15	20	25	32	40	50	65	80	100	150
D		68.4	116	125	181	189	199	210	254	282	409
E		39.9	53.3	60.9	82.6	90.3	99.8	112.4	137.6	168.5	255
F		34.9	41	47	58	65	75	90	108	140	198
H		9.5	10	15	11	12	12	14	15	12	16
L		32.5	34.0	41.0	46.5	47.4	53.2	57.8	59.5	60.0	68

## Type DP



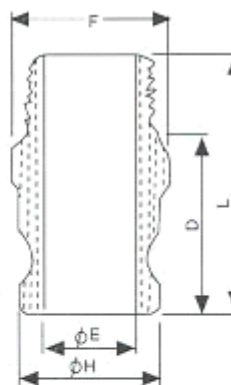
SIZE	inch	1/2"	3/4"	1"	1-1/4"	1-1/2"	2"	2-1/2"	3"	4"	6"
	mm	15	20	25	32	40	50	65	80	100	150
G		9.5	12	13	14	16	19	11	11	13	16
H		24.3	32	36.5	45.5	53.4	63	75.9	91.5	119.5	175.9
L		26.2	27.5	36.5	42.0	44.0	50.8	53.0	55.0	52.6	60

## Type E



SIZE	inch	1/2"	3/4"	1"	1-1/4"	1-1/2"	2"	2-1/2"	3"	4"	6"
	mm	15	20	25	32	40	50	65	80	100	150
E		8.0	13.8	19.8	25.9	32.3	44.5	56.7	68.0	93.4	142
H		24.3	32	36.6	45.5	53.4	63	75.9	91.5	119.5	175.9
L		14.6	21.0	27.0	33.7	40.1	52.7	66.3	79.0	104.4	157
J		30.2	35.0	38.0	48.0	55.4	65.3	79.5	93.5	121.5	187
K		41.3	51	60	57	60	70	80	100	108	146
L		86.5	86.3	105.8	109.5	113.0	138.5	149.5	166.6	174.5	224

## Type F



SIZE	inch	1/2"	3/4"	1"	1-1/4"	1-1/2"	2"	2-1/2"	3"	4"	6"
	mm	15	20	25	32	40	50	65	80	100	150
D		34.1	39.0	48.5	52.5	54.0	61.7	68.0	70.0	74.6	83
E		14.3	21.0	23.8	30.8	38.5	46.0	58.0	73.2	98.2	149
F		29.3	39.2	43.8	51.9	60.4	74.7	82.3	97.8	126.8	196
H		24.6	32	36.5	45.5	53.4		75.9	91.5	119.5	175.9
L		48.8	58.0	67.5	73.2	74.7	87.1	97.0	101.0	107.9	127



For quick, tight leak proof connections to pipe, hose, tubing or tanks

Size	In sizes from ½” to 8”
Material	In stainless steel,Alminum
Working mediom	For liquids, vapors, gases and dry products

- SUPERIOR quality body – precision machined surfaces
- Meets or exceeds Military standards
- Highest quality standards employed
- Uniform wall thickness assessors no coupler bodies
- Large diameter cam ears for longer service life
- Extra high strength handles for assurance in connections
- Recess retains gasket in coupler
- Stainless Steel cam pins for long wear and ease of replacement

EVER - TITE couplings enable pipe and hose connections to be made without the use of hands tools; thus eliminating the difficulty in making threaded connections or a flanged connection. Almost instantly connections can be made to an outlet, a faucet, a valve, a tank or coupling lengths of hose. No pipe fitting skills, wrenches or tools are required. A connection is made by simply pushing the handles down to the sides of the coupler.

**More infos,please contact us freely.**